



*Where There's Energy, There's Opportunity™*

## **Service Parts and Accessories Catalog**

**140H, 200H, 350H, 200B, 375B, 500B**

Orders: (615) 471-5200

Fax: (615) 471-5202

318 Seaboard Lane Suite 316

Franklin, TN 37067

[www.energylogic.com](http://www.energylogic.com)

**Effective February 15, 2023**

**NO PRICING**

This document contains privileged and confidential information. EnergyLogic, LLC submits this document with the understanding that it will be held in strict confidence. No part of the document may be circulated, quoted, or reproduced for distribution without the express permission of EnergyLogic, LLC.

Table of Contents, Using this Catalog.....	2
Terms and Conditions.....	3
Burner Assembly.....	4-5
Preheater Assembly.....	6
Nozzle-Line Assembly.....	7
Fuel Pump Assembly.....	8
Boiler Vessel Assembly & Controls.....	9
Cabinet Assembly.....	10-11
Accessories - Cabinet .....	12
Accessories - Service & Maintenance Tools .....	13-14
Accessories - Boiler.....	15
Accessories - Tanks .....	16
Accessories - Tank Mount Kits & Tank Accessories .....	17
Accessories - Miscellaneous.....	18
Accessories - Fuel Delivery Accessories .....	19-20
Accessories - Fuel Transfer Systems .....	21-22
Accessories - Flue Kits & Flue Material .....	23-25
Notes (blank page for customer notes) .....	26

## Using this Catalog

To use this catalog, follow these easy steps:

1. Determine what Assembly or Component you wish to order.
2. Reference the Table of Contents above to determine the page the part is located on.
3. Use the exploded views to locate the part Item Number, then cross reference the number in the table.

-or-

Scan through the tables and use any of the information provided to locate the part.

Note: Drawings are not to scale.

### General Information

- All content in this catalog is subject to change without notice.
- EnergyLogic is abbreviated as EL. "Our" refers to EnergyLogic. "You" and "your" refer to the Dealer, Reseller and Authorized Service Provider.

### Product and Price Information

1. Prices, specifications and availability of products are subject to change without notice.
2. Prices do not include charges for shipping, handling and applicable taxes.
3. Descriptions may not reflect current technical information.
4. Any typographical, photographic, drawing or specification error in products or pricing is subject to correction.
5. Products shown are not to scale.
6. Products may vary in appearance.
7. Prices listed in this catalog supersede any previous listings.
8. EL shall have the right to refuse or cancel any orders placed for any product listed at the incorrect price.
9. Promotional sales are not retroactive.
10. Advertising and selling parts over the internet is prohibited.
11. EL collects sales taxes for sales made to residents and businesses of the State of Tennessee, Wisconsin, Pennsylvania
12. Advertising and selling parts over the internet is prohibited.

### Parts Distribution

1. You will be given the responsibility of selling service parts to customers in your coverage area.
2. If a customer in your service area contacts EL to purchase parts, EL will refer them to you.
3. Once the customer contacts you, EL expects a follow up communication with that customer within 24 hours. EL strongly urges you to stock a detailed list of parts to quickly meet your customer's needs.
4. A Recommended Service Parts Stocking List and Consumable Parts List are available upon request.

## Placing Orders

1. Orders may be placed 24 hours a day via EL's Dealer Website or by contacting customer service at customerservice@energylogic.com. You may also send a fax order form or purchase order to 615-471-5202. A web-based or hardcopy Purchase Order is required for all orders.
2. If an order is placed via phone, EL will send an order confirmation to you to sign and return before processing will occur.
3. With respect to "small package items", if an item on a customer order is not available to ship at the customer's requested ship date because of a backorder or lead-time situation, EL will automatically split the order and ship what is available to ship at the customer request date, unless we receive written instructions on the customer PO to the contrary. We will not split an order for a customer with "Ship Complete" terms. The customer will be responsible for all freight charges on split orders.
4. With respect to "LTL items", if an item on a customer order is not available to ship at the customer's requested ship date because of a backorder or lead-time situation, EL will contact customer for confirmation as to whether we should split the order or not. We must receive written confirmation from the customer prior to splitting an order. The customer will be responsible for all freight charges on split orders.
5. "Small Package" orders requested for same day shipping must be specified for Air Freight and be received by 11AM CST in order to ship same day. Upon customer request, EL will make every effort to ship such order the same day, but cannot guarantee such.
6. Freight terms must be documented by a PO, a signed order confirmation or an e-mail/fax from the customer prior to shipping overnight orders.
7. Purchase orders will be limited to one revision within 24 hours of original order placement. Additional revisions will be entered as a separate order from original PO & subject to standard shipping charges.

## Terms

1. All orders are shipped F.O.B. EnergyLogic.
2. Payment terms may be granted to customers based on an evaluation of credit risk.
3. To retain payment terms, customer account must remain in good standing with payment received by the required due dates.
4. EnergyLogic may adjust or amend customer terms at its discretion, based on customer payment history or changes in credit risk.

## Shipping

1. Orders will be shipped within 72 business hours of your order if the order is received prior to 11:00 AM CST (*stocking orders may take longer*).
2. EL shall use commercially reasonable methods to ship parts.
3. Customer Pickup orders must be placed 24 hours in advance and specify a requested pick up date and time.

## Return Authorization

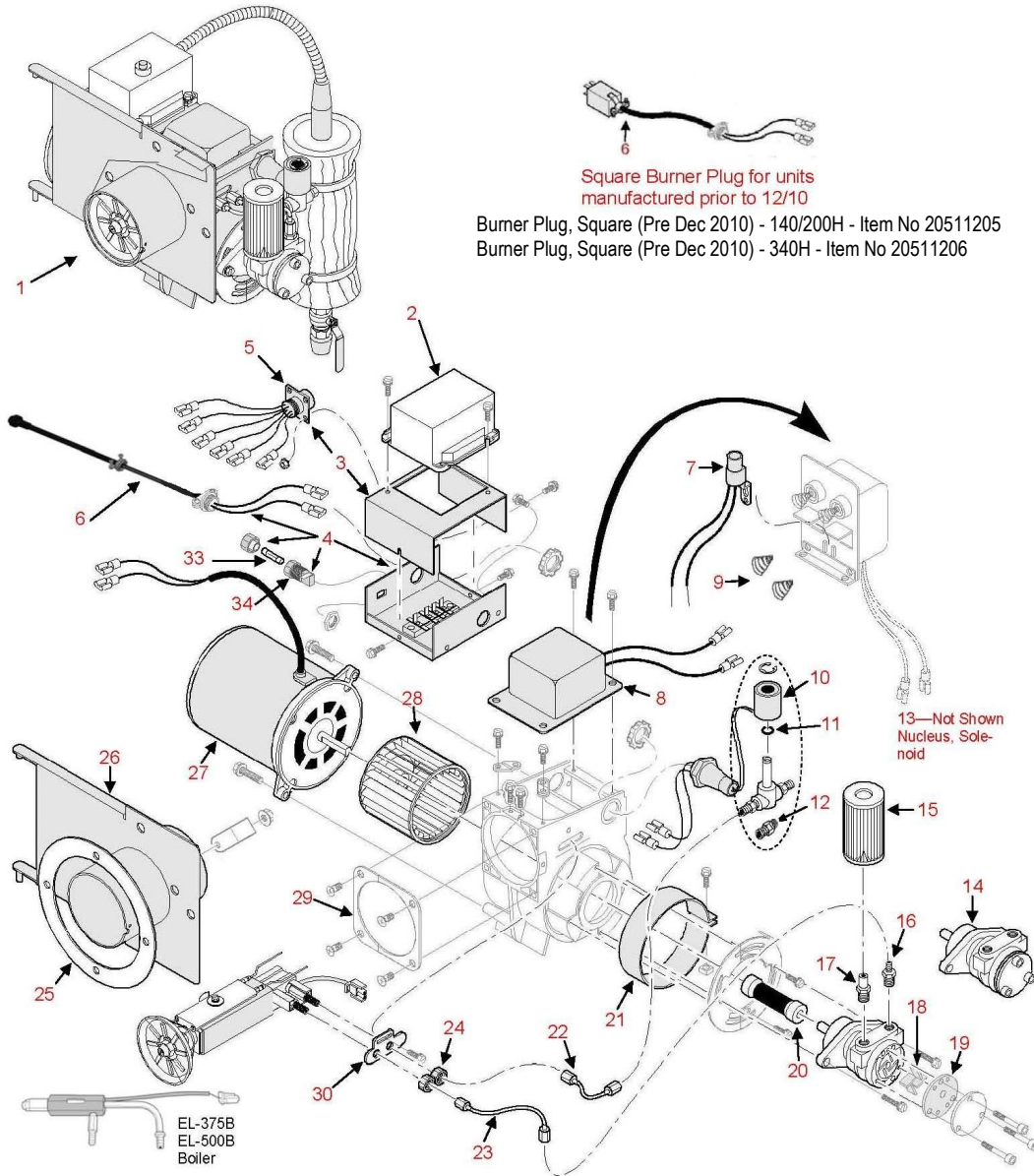
1. Prior to returning any part you must obtain a return authorization number (RAN).
2. EL shall have the right to deny any RAN request.
3. Parts returned without a RAN will not be accepted.
4. Warranty returns must be submitted within 30 days of service.
5. All return parts must be received within 30 days from RAN issue date or they will be denied.
6. All stock adjustments must be returned within one year from the date of purchase, in "new" condition without alteration and in original package.
7. Proof of Purchase may be required
8. Restocking Fee may apply.
9. EL shall at its discretion either: (a) request photos with authorization to scrap the part and issue credit, (b) require the part to be returned freight prepaid, with credit due upon receipt and evaluation, or (c) send a replacement part.
10. Parts received which are found not to be defective, not in new condition or over 30 days will be returned at customer's expense.

## Processing Credits

Credits will be processed within 30 days from our receipt of all the information required to process the credit. Credits will remain valid for 6 months from the date of issue.

## Parts Use Statement

When repairs are made within the Limited Warranty, only genuine EnergyLogic, LLC or EnergyLogic, LLC (EL) approved parts and accessories may be used. Parts and accessories advertised as being "the same" as parts required by EL, but not sold through EL, do not qualify for use in warranty repairs or any repairs paid for by EL. Parts not approved by EL may not have been validated, tested or certified for use. Non-approved parts or assemblies may result in a change to the unit's design characteristics and will affect its ability to conform to UL or NFPA guidelines. For this reason, EL disclaims all liability for loss or damage resulting from the use of non-approved parts or assemblies and the Limited Warranty of the unit containing such parts or assemblies is voided. EL parts installed onto a product not sold by EL do not conform to UL or NFPA guidelines. EL disclaims all liability for loss or damage resulting from such products and the Limited Warranty of such parts will be voided.



Square Burner Plug for units  
manufactured prior to 12/10

Burner Plug, Square (Pre Dec 2010) - 140/200H - Item No 20511205  
Burner Plug, Square (Pre Dec 2010) - 340H - Item No 20511206

13—Not Shown  
Nucleus, Solenoid

EL-375B  
EL-500B  
Boiler

Large Air compressor with 1/4" output port  
(Pre Sept 11, 2013)

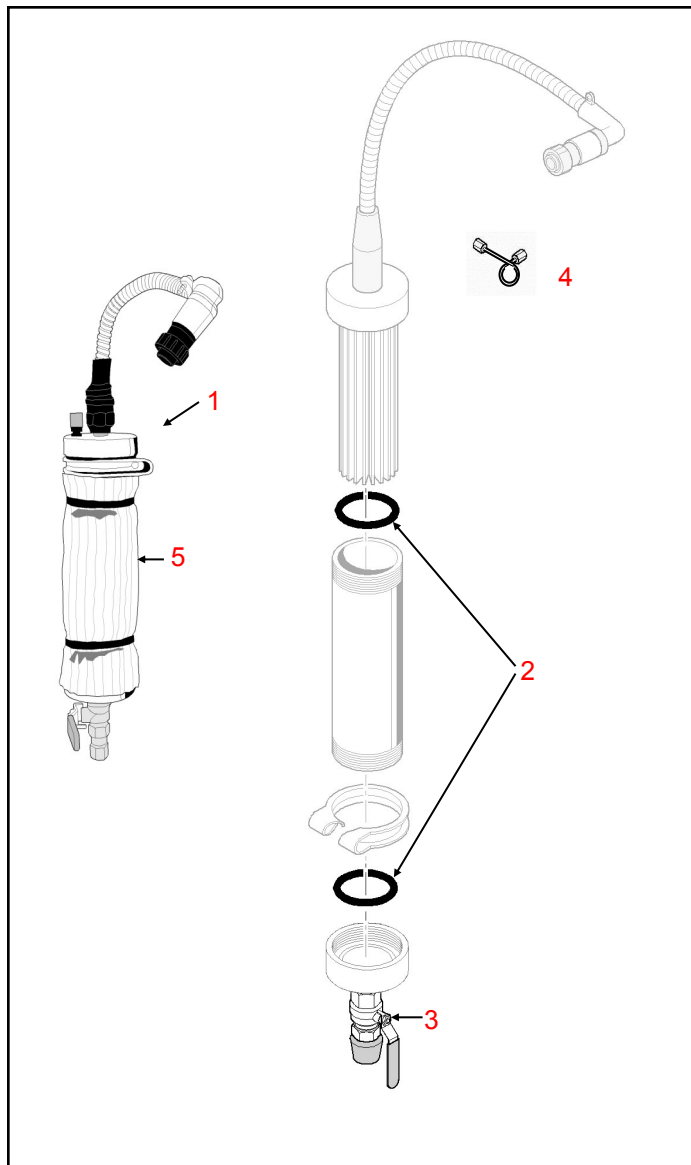


Small Air compressor no output port  
(Sept 11, 2013 fwd)

Ref.#	Part Description	140H	200H	340H	350H	200B	375B	500B	Number	Qty			
1	Burner - 140H w/Preheater round plug	x							04000081	1			
1	Burner - 140H w/Preheater square plug	x							04000081-SP				
1	Burner - 200H w/Preheater round plug		x						04000082	1			
1	Burner - 200H w/Preheater square plug		x						04000082-SP				
1	Burner - 350H w/Preheater round plug			x	x				04000227	1			
1	Burner - 350H w/Preheater square plug			x	x				04000227-SP	1			
1	Burner - 200B w/Preheater					x			13010101	1			
1	Burner - 375B <b>no</b> Preheater						x		13010100	1			
1	Burner - 500B <b>no</b> Preheater							x	13010102	1			
2	Control - Primary, Carlin 30 Second	x	x	x	x	x			05000135	1			
2	Control - Primary, 15 Second						x	x	06001027	1			
3	Wire Box Cover Assembly	x	x	x	x				14010112	1			
4	Wire Box Base Assembly, Round plug	x	x						04000106	1			
4	Wire Box Base Assembly, Round plug			x	x				04000107	1			
4	Wire Box Base Assembly					x	x	x	14010109	1			

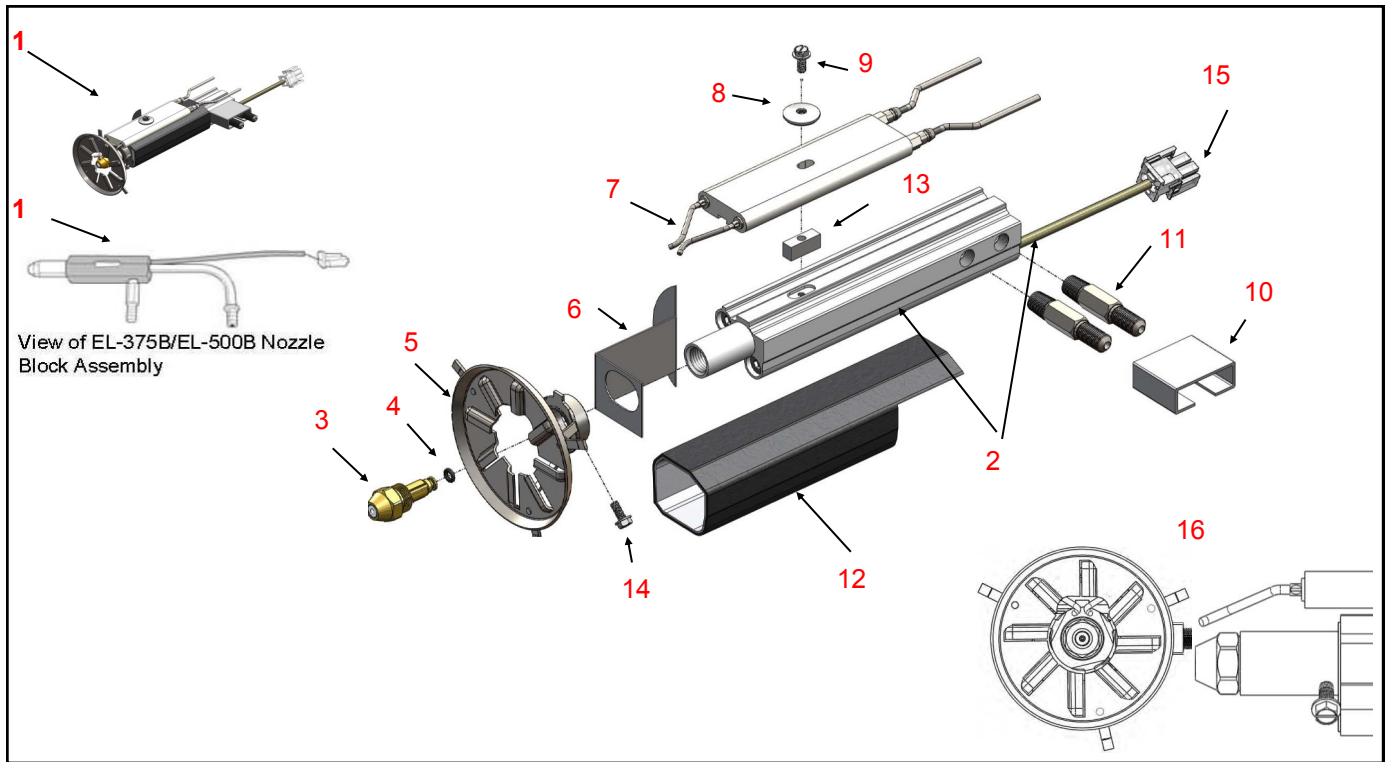
BURNER ASSEMBLY		Current Models							Item Number				
Ref.#	Part Description	140H	200H	340H	350H	200B	375B	500B		Qty			
5	Preheater Wiring Pigtail (6 pin)	x	x	x	x	x	x	x	20541310	1			
5	Preheater Wiring Pigtail (7 pin)						x	x	14010121	1			
6	Burner cord w/Round plug (12/10 Fwd), 9"	x	x						04000111	1			
6	Burner cord w/Round plug (12/10 Fwd), 12"			x	x				04000112	1			
6	Burner cord w/Square plug	x	x						20511205	1			
6	Burner cord w/Square plug			x	x				20511206	1			
7	Detector - Cad Cell	x	x	x	x	x	x	x	20210110	1			
8	Transformer - Ignition	x	x		x	x			20213137	1			
8	Transformer - Ignition			x			x	x	20213145	1			
9	Spring—Transformer	x	x	x	x	x	x	x	20213138	1			
10	Valve - Solenoid w/Fittings	x	x	x	x	x	x	x	14010134	1			
11	O-Ring - Solenoid Valve	x	x	x	x	x	x	x	20293199	1			
12	Fitting—Solenoid Valve	x	x	x	x	x	x	x	20491154	1			
13*	Nucleus-Solenoid Valve w/Spring	x	x	x	x	x	x	x	20293198	1			
14	Air Compressor (Lg prior to 9/11/13)	x	x	x	x	x	x	x	20210111	1			
14	Air Compressor (Sm beginning 9/11/13)	x	x		x	x			06000807	1			
14	Air Compressor Kit, (Sm w/ fittings)	x	x						05000167	1			
14	Air Compressor Kit, (Sm w/ fittings)				x				05000168	1			
15	Filter - Air Compressor	x	x	x	x	x	x	x	20210112	1			
15	Filter - Air Compressor (6 Pk)	x	x	x	x	x	x	x	05000037	1			
16	Union - 3/16FLx1/4MIP, .0645" (Lg AC)	x	x			x			14610010	1			
16	Union - 3/16FLx1/4MIP, .052" (Lg AC)			x	x				14610005	1			
16	Union - 3/16FLx1/4 MIP, .028" (Lg AC)						x	x	14610001	1			
16	Union - 3/16FLx1/8 MIP, .042" (SM AC)	x	x			x			04000300	1			
16	Union - 3/16FLx1/8 MIP (SM AC)				x				06000024	1			
17	Coupler - Air Comp Filter 1/4" (Lg AC)	x	x	x	x	x	x	x	20411121	1			
17	Coupler - Air Comp Filter 1/8" (Sm AC)	x	x		x	x			06000794	1			
18	Vanes - Air Compressor, Lg (4 Pk) prior to 9/11/13	x	x	x		x	x	x	06000519	1			
18	Vanes - Air Compressor, Sm (4 Pk) Current	x	x		x	x			06000821	1			
19	Plate - Carbon End	x	x	x	x	x	x	x	20213143	1			
20	Coupling - Compressor to Burner	x	x	x	x	x	x	x	20210122	1			
21	Band - Air, AF	x	x			x			20213132	1			
21	Band - Air, SF			x			x	x	20213133	1			
21	Band - Air, Slotted				x				06000595	1			
22	Copper Line - S-NB	x	x		x	x			05000038	1			
22	Copper Line - S-NB			x					05000039	1			
22	Copper Line - S-NB						x	x	05000040	1			
23	Copper Line - AC-NB	x	x	x	x	x	x	x	20630115	1			
24	Nut - Knurled 3/8-24	x	x	x	x	x	x	x	20410110	1			
25	Gasket - Burner Klinger	x	x	x	x				20910103	1			
25	Gasket - Flange					x	x	x	20210121	1			
26	Air Tube - Hinged	x	x						20311116	1			
26	Air Tube - Hinged, Diameter 4.3			x	x				04000062	1			
26	*Air Tube - Non-Hinged					x			20210119	1			
26	*Air Tube - Non-Hinged						x	x	20361187	1			
27	Motor - 1/5HP Burner AF (prior to 9/11/13)	x	x			x			20213139	1			
27	Motor - 1/4HP Burner SF			x			x	x	20213147	1			
27	*Motor - 1/7HP Carlin, AF (current)	x	x		x	x			06000825	1			
28	Wheel - Burner Blower, AF	x	x		x	x			20213140	1			
28	Wheel - Burner Blower, SF			x			x	x	20210117	1			
29	Flange - Burner Sq Plate AF/SF	x	x	x	x	x	x	x	20213136	1			
30	Escutcheon Plate (2 hole)	x	x		x	x			20213148	1			
30	Escutcheon Plate (1 hole)			x			x	x	20213153	1			
31	* Relay - Burner (500)						x	x	06000475	1			
32	* Flange - 4" Mounting Kit					x	x	x	20210120	1			
33	Fuse, 8 AMP	x	x	x		x	x	x	20510113	1			
34	Fuse Holder	x	x	x		x	x	x	20510112	1			
35	Screw - Air Compressor Mtng 1/4-20X1	x	x	x		x	x	x	20410106	1			

# Preheater Assembly



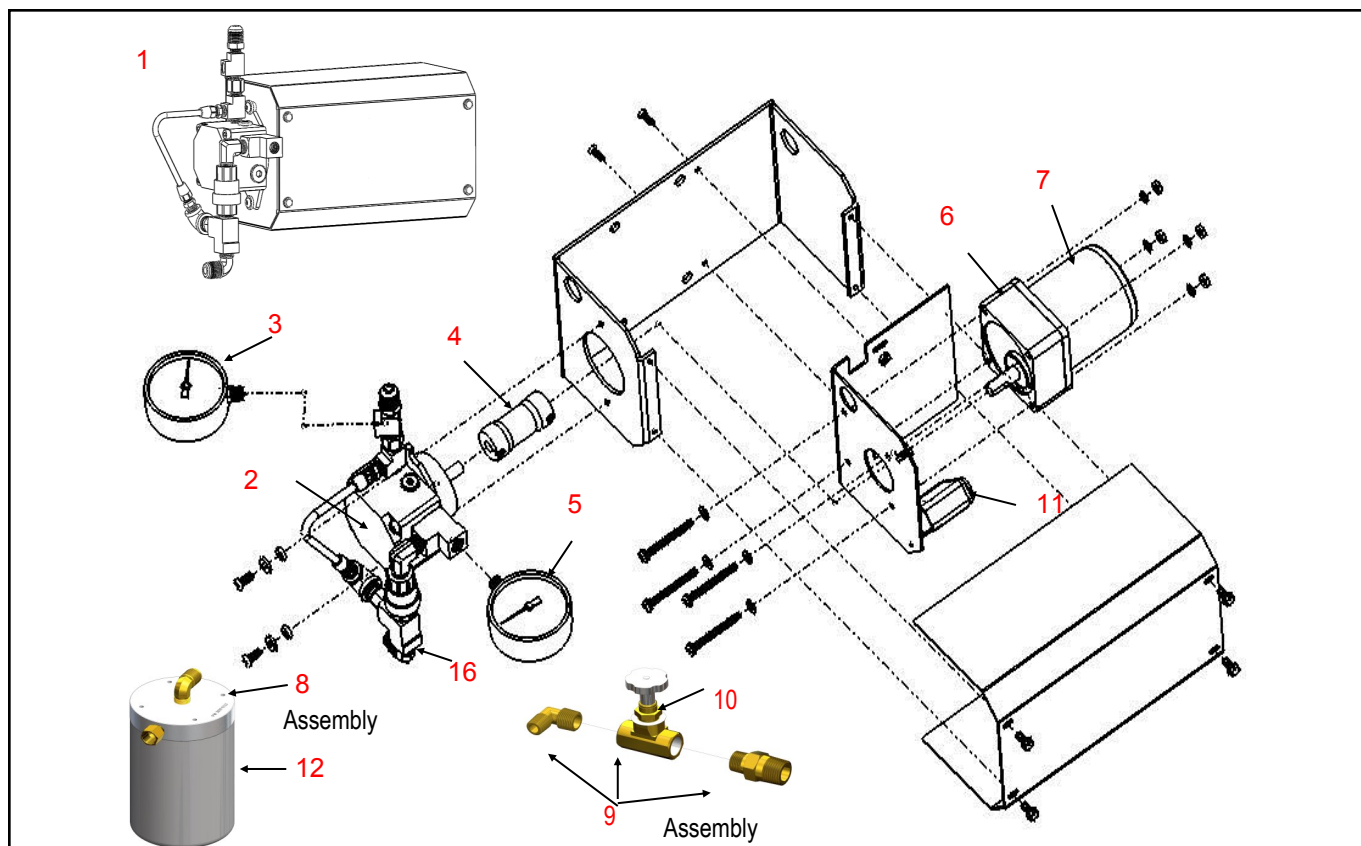
PREHEATER ASSEMBLY * Not Pictured		Current Models							Item Number				
Ref.#	Part Description	140H	200H	340H	350H	200B	375B	500B		Qty			
1	Preheater Assembly - 140H	x							14040187	1			
1	Preheater Assembly - 200H		x						14040188	1			
1	Preheater Assembly - 340H/350H			x	x				14040189	1			
1	Preheater Assembly - 200B					x			14040192	1			
1	Preheater Assembly - 375B						x		14040193	1			
1	Preheater Assembly - 500B							x	14040190	1			
2	Gasket - Preheater 2-5/8 O.D.	x	x	x	x	x	x	x	20940122	1			
3	Valve - 1/4 NPT, Shutoff	x	x	x	x	x	x	x	06000074	1			
4	Copper Line - SV-PH	x	x	x	x				05000044	1			
4	Copper Line - SV-PH					x			05000045	1			
5	Insulation - Kit, Preheater Foil	x	x			x			05000046	1			
5	Insulation - Kit, Preheater Foil			x	x				05000047	1			
5	Insulation - Kit, Preheater Foil						x	x	05000048	1			
6	*Bolt - Preheater Mntg , 1/4-20 x 3 3/4"	x	x		x	x			20410120	1			
6	*Bolt - Preheater Mntg , 5/16-18 x 3 1/2"			x			x	x	20440156	1			
7	*Valve, Solenoid no fittings						x	x	20290197	1			





NOZZLE LINE ASSEMBLY * Not Pictured		Current Models							Item Number				
Ref.#	Part Description	140H	200H	340H	350H	200B	375B	500B		Qty			
1	Nozzle Line Assembly	x	x			x			14010124	1			
1	Nozzle Line Assembly			x	x				04000230	1			
1	Nozzle Line Assembly						x	x	14010127	1			
2	Nozzle Block Assembly, w/ PTC	x	x	x	x	x			04000056	1			
2	Nozzle Block Assembly, w/PTC						x	x	04000057	1			
3	Nozzle - #5	x	x			x			20210123	1			
3	Nozzle - #5 (50 Pk)	x	x			x			14013152	1			
3	Nozzle - #28			x	x		x	x	20210124	1			
3	Nozzle - #28 (50 Pk)			x	x		x	x	14013151	1			
4	O-Ring - Nozzle	x	x	x	x	x	x	x	20213152	1			
5	Head - Flame Retention	x	x			x			04000280	1			
5	Head - Flame Retention			x	x		x	x	04000260	1			
6	Air Vane	x	x	x	x	x			20311126	1			
6	Air Vane						x	x	20311121	1			
7	Electrode - single bend (5 Pk)	x	x	x	x	x			05000049	1			
7	Electrode - single bend (beginning 9/11/13)	x	x	x	x	x			06000593	1			
7	Electrode - single bend (beginning 9/11/13)						x	x	06000741	1			
8	Washer - 8 x 3/4, Electrode	x	x	x	x	x	x	x	20410115	1			
9	Screw - 8-32 x 7/8 Hex	x	x	x	x	x	x	x	20410114	1			
10	Bracket-Nozzle Block Centering	x	x	x	x	x			20311117	1			
11	Fitting - Oil/Air Bulkhead	x	x	x	x	x	x	x	20411122	1			
12	Sleeving	x	x	x	x	x			20990149	1			
13	Key - Mount, Extr Nozzle Block	x	x	x	x	x			20311130	1			
14	Screw - 8-32 x 3/8	x	x	x	x	x	x	x	20410117	1			
15	PTC Assembly, Extruded Block 8.7mm	x	x	x	x	x			14010125	1			
15	PTC Assembly, Hex Block 6.5mm						x	x	14013211	1			
16	Kit, electrode&FRH 140/200H,200B	x	x			x			05000162	1			
16	Kit, electrode&FRH 340H			x	x				05000163	1			
16	Kit, electrode&FRH 375, 500						x	x	05000164	1			
17	*Nozzle Block Pigtail Assembly	x	x	x	x	x			14010126	1			

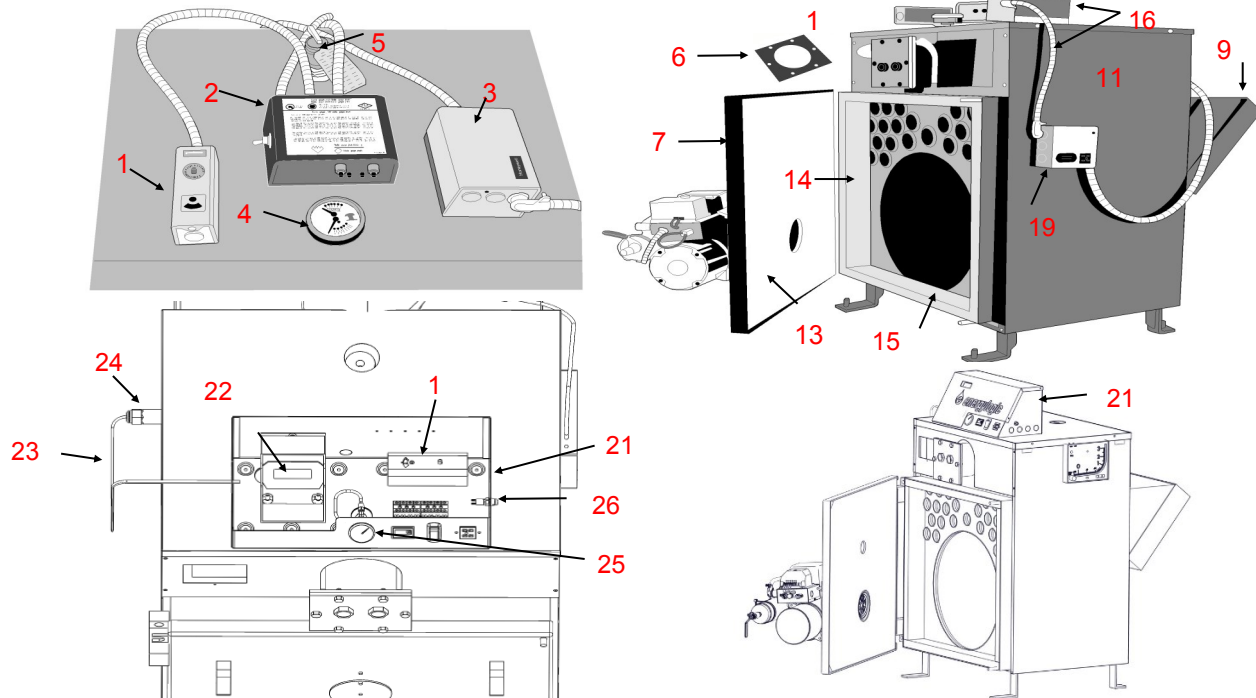
# Fuel Pump Assembly



PUMP ASSEMBLY		Current Models							Item				
Ref.#	Part Description	140H	200H	340H	350H	200B	375B	500B	Number	Qty			
1	Pump Assembly, 140H	x							14020300	1			
1	Pump Assembly, 200H		x						14020301	1			
1	Pump Assembly, 340H/350H			x	x				04000289	1			
1	Pump Assembly, 200B					x			14020304	1			
1	Pump Assembly, 375B						x		14020305	1			
1	Pump Assembly, 500B							x	14020306	1			
2	Pump w/Fittings	x	x	x	x	x	x		14020155	1			
2	Pump w/Fittings & solenoid valve							x	04000055	1			
3	Gauge - 0-160 PSI Pressure, 1/8	x	x	x	x	x	x	x	20270183	1			
4	Coupling - Pump to Motor	x	x	x	x	x	x	x	20220158	1			
5	Gauge - Vac/Pressure Combo 1/4"	x	x	x	x	x	x	x	20270188	1			
6	Motor w/Gear Box, 140H (after March 2013)	x							05000155	1			
6	Motor w/Gear Box, 200H/200B (after March 2013)		x			x			05000156	1			
6	Motor w/Gear Box, 340H/350H			x	x				05000158	1			
6	Gear Box, Oriental 3GN3KA						x		20220195	1			
6	Gear Box, Oriental 3GN9KA							x	20220156	1			
7	Motor w/Capacitor 3IK15GN-AWU						x	x	20220155	1			
8	Filter Head Assembly w/Filter	x	x	x	x	x	x	x	04000068	1			
8	Filter Head Assembly w/o Filter	x	x	x	x	x	x	x	04000189	1			
9	Firestop Valve Assembly	x	x	x	x	x	x	x	04000067	1			
10	Firestop Valve	x	x	x	x	x	x	x	20270186	1			
11	Capacitor (Oriental motor only)						x	x	20223198	1			
11	Capacitor (ZD motor only)	x	x	x	x	x			06000842	1			
12	Filter - SS - Spin-On, 5 in.	x	x	x	x	x	x	x	20270185	1			
13	*Filter - SS Spin-On, 5 in. (12 Pack)	x	x	x	x	x	x	x	05000052	1			
14	*Filter - SS - Spin-On, 8 in.	x	x	x	x	x	x	x	20203106	1			
15	*Solenoid Valve (no fittings)						x	x	20290197	1			
16	Valve, 1/4" Check	x	x	x	x	x	x	x	20220153	1			
17	Valve, Relief 50 PSI, 1/8"	x	x	x	x	x	x	x	06000958	1			
	*Retrofit Relief Valve Kit, 1/4" to 1/8"	x	x	x	x	x	x	x	05000197	1			
18	* O-ring, Danfoss Pump	x	x	x	x	x	x		20923152	1			
19	*Motor/Gearbox/Coupling/Housing Kit	x							04000293	1			
19	*Motor/Gearbox/Coupling/Housing Kit		x						04000294	1			
19	*Motor/Gearbox/Pump Housing Kit			x					04000295	1			
20	*Adhesive/Gasket Sealant #2	x	x	x	x	x	x	x	30963113	1			



# Boiler Vessel Assembly & Controls



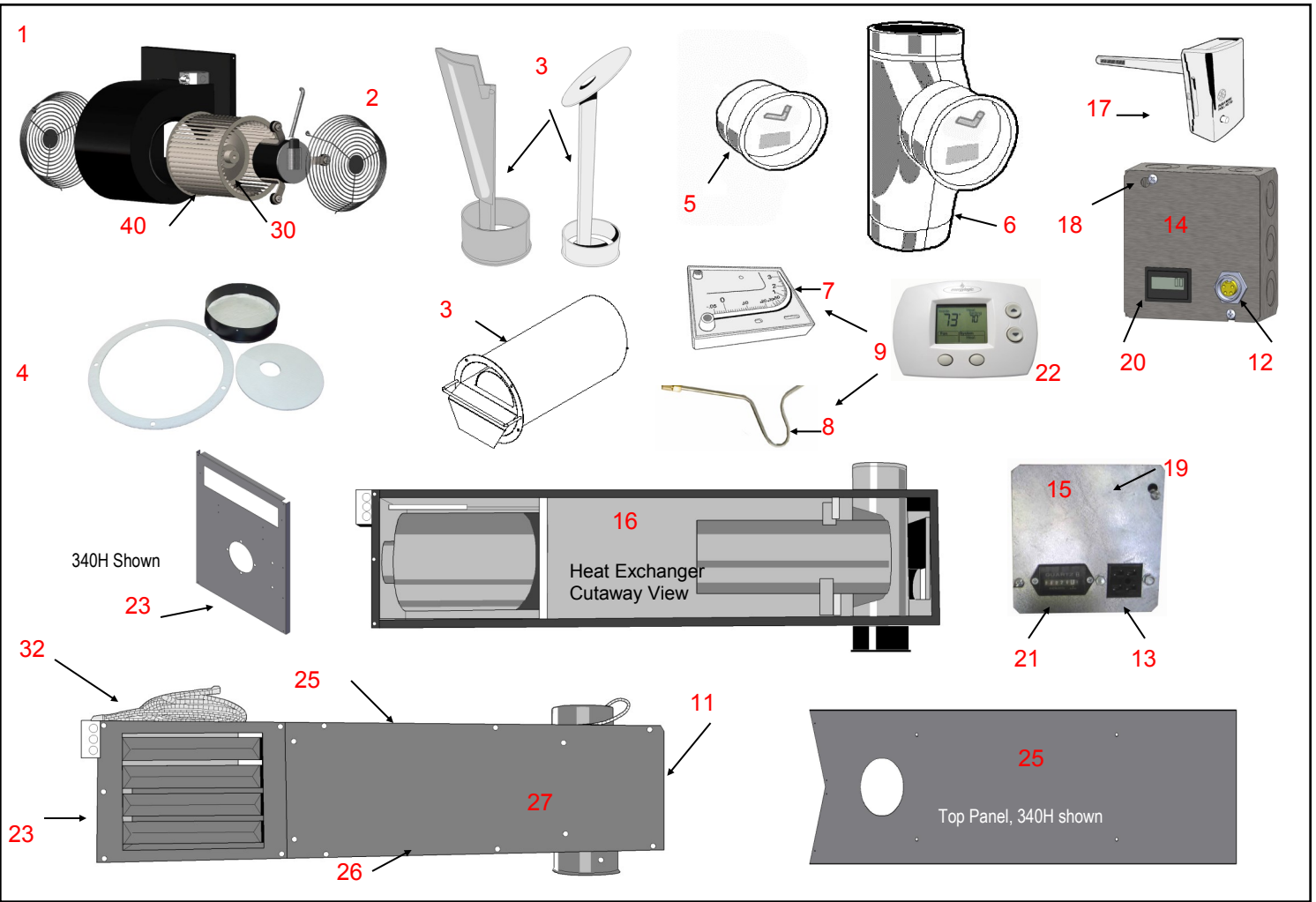
Boiler Vessel w/Controls

BOILER ASSEMBLY		* Not Pictured			Item Number	Qty			
Ref.#	Part Description	200B	375B	500B					
1	Aquastat—High Limit Temp Cut-off	x	x	x	06000134	1			
2	Control—Low Water	x	x	x	20263180	1			
3	Aquastat—Triple	x	x	x	20263179	1			
4	Gauge - Boiler Temp/Pressure (°F/°C)	x	x	x	20270302	1			
5	Valve - Pressure Relief, 30 PSI	x	x	x	20663146	1			
6	Gasket - Boiler Coil	x	x	x	20363219	1			
7	Door w/ Insulation	x	x	x	20363228	1			
9	Gasket Rope - Breech 1/2"	x	x	x	05000055	1			
10	Coil Plate	x	x	x	20363218	1			
12	*Grease - Heat Conductive	x	x	x	20260190	1			
13	Insulation - Door 26 1/2" x 26 3/4"	x	x	x	20963132	1			
14	Insulation-Left/Right-24 1/8" x 4" x 1 1/4"			x	20963142	1			
14	Insulation - Left/Right - 24 1/8" x 3" x 1 1/4"	x	x		20963130	1			
15	Insulation - Top/Bottom - 26 1/4" x 3" x 1"	x	x		20963131	1			
15	Insulation-Top/Bottom-26 1/4" x 4" x 1"			x	20963143	1			
16	Wire Harness Assembly - Boiler	x	x	x	14010117	1			
17	*High Temp Adhesive	x	x	x	30990103	1			
18	*Boiler Burner Plug Assembly	x	x	x	14010139	1			
19	Wiring Box Assembly	x	x	x	14030179	1			
20	*Baffle, Plate		x	x	06000290	1			
21	Boiler Control Box Assembly	x	x	x	04000312	1			
22	Control, Aquasmart	x	x	x	06000818	1			
23	Sensor, Aquasmart	x	x	x	06000819	1			
24	Thermowell, Aquasmart	x	x	x	06000864	1			
25	Gauge - Pressure, Aquasmart	x	x	x	06000835	1			
26	*Fuse—Fast Acting, 20A, 250V	x	x	x	06000837	1			
	*Switch, Rocker, 20A	x	x	x	06000836	1			

≈ Wire harness includes items 1,2,3,19

**Special Note:** 495B boiler— used same burner/preheater/fuel pump/controls as the 500B. Contact EL Customer Service or Technical Support for price & availability of unique parts (insulation).

# Cabinet Assembly



CABINET ASSEMBLY		* Not Pictured								Current Models				Item					
Ref.#	Part Description	140H	200H	340H	350H	200B	375B	500B		Number	Qty								
1	Blower - Assembly 1/2 HP, 140H	x								13031001	1								
1	Blower - Assembly 1/2 HP, 200H		x							13031002	1								
1	Blower - Assembly 3/4 HP, 340H			x						13031003	1								
1	Blower - Assembly 1HP, 350H				x					04000229	1								
40	Wheel - Blower 9 inch OD, 140H	x								06000039	1								
40	Wheel - Blower 10 inch OD, 200H/340H		x	x						20200200	1								
40	Wheel - Blower 12.5 inch OD, 350H				x					06000592	1								
2	Guard - Blower Fan	x	x	x	x					20303110	1								
3	Baffle w/ Drip Cap, 1 Piece 140/200	x	x							20333158	1								
3	Baffle w/ Drip Cap, 1 Piece 340 only			x						20331136	1								
3	Baffle Assembly 350 only				x					04000219	1								
3	Baffle Assembly 350 Canadian only				x					04000220	1								
4	* Drip Cap with gasket, no baffle				x					04000218	1								
4	Gasket - baffle				x					06000584	1								
4	*Gasket - Drip Cap	x	x	x	x					20933118	1								
5	Damper - 7 Inch Barometric	x	x	x	x	x	x			20770110	1								
5	Damper - 7 Inch Barometric, Stainless Steel	x	x	x	x	x	x			20770110—SS	1								
5	Damper - 9 Inch Barometric							x		20770112	1								
5	Damper - 8 Inch Barometric, DW T	x	x	x		x	x			20770109	1								
6	Tee - Barometric & Damper 8", Stainless Steel	x	x	x	x	x	x			04000045	1								
6	Tee - Barometric & Damper 10"							x		14070199	1								
7	Gauge - Draft (Manometer)	x	x	x	x	x	x	x		20270184	1								
8	Draft Gauge Probe Kit	x	x	x	x	x	x	x		14003110	1								
9	Draft Gauge Assembly	x	x	x	x	x	x	x		14070198	1								
10	* Oil - Draft Gauge	x	x	x	x	x	x	x		20273189	1								

CABINET ASSEMBLY		* Not Pictured							Item Number	Current Models				Qty			
Item	Part Description	140H	200H	340H	350H	200B	375B	500B									
11	Cabinet Assembly				x				04000224	1							
12	Receptacle Rnd - Burner Wiring (12/10 Fwd)	x	x	x	x				06000221	1							
13	Receptacle Square - Burner Wiring					x	x	x	20530138	1							
14	Wiring Box Asmbly - Rnd Plug (12/10 Fwd)	x	x	x	x				04000108	1							
15	Wiring Box Assembly - Square Plug	x	x	x					14030160	1							
16	Heat Exchanger Assembly w/Drip Cap	x							05000065	1							
16	Heat Exchanger Assembly w/Drip Cap		x						05000066	1							
17	Switch - Fan/Limit, 11 Inch	x	x	x	x				20230165	1							
18	Cover Plate - Wiring Box, Rnd Plug	x	x	x		x	x	x	06000216	1							
19	Cover - Wiring Box, Square Plug	x	x	x	x	x	x	x	14033208	1							
20	Hour Meter - Digital	x	x	x	x	x	x	x	06000224	1							
21	Hour Meter - Analog	x	x	x		x	x	x	20230166	1							
22	Thermostat - Wall, Programmable	x	x	x	x	x	x	x	20230178	1							
23	* Panel - Cabinet, Burner	x	x						20331150	1							
23	Panel - Cabinet, Burner, 340H			x					20331153	1							
23	* Panel - Cabinet, Burner, 350H				x				06000572	1							
24	* Panel - Cabinet, Filler	x	x		x				20331146	1							
24	* Panel - Cabinet, Filler			x					20233171	1							
25	* Panel - Cabinet, Top	x							20331148	1							
25	* Panel - Cabinet, Top		x						20331156	1							
25	Panel - Cap, Top			x					20331147	1							
25	* Panel - Cap, Top/Bottom				x				06000575	1							
26	* Panel - Cabinet, Bottom	x							20331152	1							
26	* Panel - Cabinet, Bottom		x						20331155	1							
26	* Panel - Cabinet, Bottom			x					20331145	1							
27	Panel - Cabinet, Side	x							20331144	1							
27	Panel - Cabinet, Side		x						20331154	1							
28	* Panel - Cabinet, Left Side			x					20331149	1							
28	* Panel - Cabinet, Right Side			x					20331151	1							
29	*Panel - Cabinet, End "V"			x					20331198	1							
30	* Motor - 1/2 HP Blower w/capacitor	x	x						05000152	1							
30	* Motor - 3/4 HP Blower w/capacitor			x					05000153	1							
30	* Motor - 1 HP Blower w/capacitor (GE)				x				05000154	1							
31	*Capacitor - 7mfd, 1/3 HP Blower	x							20231171	1							
31	*Capacitor - 10mfd, 1/2 HP Blower		x						20231172	1							
31	*Capacitor - 15mfd, 3/4 HP Blower			x					20231173	1							
31	*Capacitor - 20mfd, 1 HP Blower				x				06000636	1							
32	*Wire Harness w/Round Plug (12/10 Fwd)	x	x		x				04000071	1							
32	*Wire Harness w/Round Plug (12/10 Fwd)			x					04000072	1							
33	*T/Stat Wire Assembly	x	x	x	x	x	x	x	20511311	1							
34	*Gasket, ERU Cover			x					05000068	1							
35	*Blower Motor Mount Replacement Kit		x	x					05000159	1							
35	*Blower Motor Mount Replacement Kit				x				06000633	1							
35	*Blower Motor Mount Replacement Kit	x							05000191	1							

Part Description	Current Models							Item Number				
	140H	200H	340H	350H	200B	375B	500B		Qty			
Bracket - Furnace Wall Mount (pair)	x	x	x	x				05000087	1			



The furnace wall brackets provide a support structure for mounting the furnace to a wall.

Part Description	Current Models							Item Number				
	140H	200H	340H	350H	200B	375B	500B		Qty			
Louver - Standard	x	x		x				20331138	1			



A Standard Louver can be added to the furnace to allow air dispersion from both sides when the furnace is ceiling mounted.

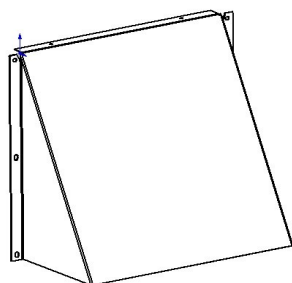
Part Description	Current Models							Item Number				
	140H	200H	340H	350H	200B	375B	500B		Qty			
Louver - Multi-Direct	x	x		x				20331142	1			



A Multi-Directional Louver allows the operator to direct and spread the heated air to a more beneficial location.  
Note: must be used in conjunction with standard louvers.

Part Description	Current Models							Item Number				
	140H	200H	340H	350H	200B	375B	500B		Qty			
DownFlow Vent	x	x		x				06000440	1			

The Down Flow Vent directs heated air downward toward the shop floor, & is effective up to 20 feet above the desired heating area. It's perfect for facilities with high ceilings where the furnace is mounted above 12 feet.



Part Description	Current Models							Item Number				
	140H	200H	340H	350H	200B	375B	500B		Qty			
Combustion Analyzer/Manometer, Printer	x	x	x	x	x	x	x	20203111	1			
*Filter- Combustion Analyzer (5 Pack)	x	x	x	x	x	x	x	20203116	1			
*Filter Assy-Combustion Anlz (Mini Pump)	x	x	x	x	x	x	x	20203117	1			
*Filter-Combustion Analyzer (Oil)	x	x	x	x	x	x	x	20203118	1			



The Combustion Analyzer Kit is used to obtain furnace and boiler exhaust gas readings (for example CO<sub>2</sub>, CO O<sub>2</sub>), over fire pressure, draft and smoke spot. The kit comes complete with printer so you can print a copy for your customers. Enhance your professional services with the right tools.

Part Description	Current Models							Item Number				
	140H	200H	340H	350H	200B	375B	500B		Qty			
Cleaning Tool with extension pole	x	x	x	x	x	x	x	14033227	1			
Cleaning Tool with extension pole				x				04000279	1			



350 Cleaning Tool



The tool head is curved to shape the furnace heat exchanger and boiler combustion chamber in order to remove ash completely and efficiently. Each tool allows full reach throughout each furnace's heat exchanger.

Part Description	Current Models							Item Number				
	140H	200H	340H	350H	200B	375B	500B		Qty			
*Boiler Brush Tube-1.75" x 1/4 NPT					x			20092104	1			
*Boiler Brush Tube-2.00" x 1/4 NPT						x	x	20092106	1			
*Boiler Brush Tube Kit—1.75" and 2.00"					x	x	x	05000069	1			



Clean ash from boiler tubes using the Boiler brushes specifically designed for EnergyLogic boilers. The kit comes with both sizes.

Part Description	Current Models							Item Number				
	140H	200H	340H	350H	200B	375B	500B		Qty			
Extension Rod T Handle	x	x	x	x	x	x	x	20092112	1			
Extension Rod 4' x 1/4" NPT	x	x	x	x	x	x	x	20092114	1			
Extension Rod 6' x 1/4" NPT	x	x	x	x	x	x	x	20092116	1			



Extension rods and handles to go with flue and boiler brushes.

Part Description	Current Models							Item Number				
	140H	200H	340H	350H	200B	375B	500B		Qty			
Boiler Brush Kit					x			05000189	1			
Boiler Brush Kit						x	x	05000190	1			



Kit includes a rod, brush and handle.

Part Description	Current Models							Item Number				
	140H	200H	340H	350H	200B	375B	500B		Qty			
*Flue Brush-6" x 1/4 NPT	x	x			x			06000084	1			
*Flue Brush-8" x 1/4 NPT	x	x	x	x	x	x		20092100	1			
*Flue Brush-10" x 1/4 NPT							x	20092102	1			
*Flue Brush Kit—6", 8" and 10"	x	x	x	x	x	x	x	05000070	1			



The brushes are carefully selected to perform the most common flue / chimney cleaning. Purchase individually or as a kit which comes with all 3 brushes.

Part Description	Current Models							Item Number				
	140H	200H	340H	350H	200B	375B	500B		Qty			
Burner Brush Kit (includes all pictured)	x	x	x	x	x	x	x	05000071	1			
Burner Pick Hand Tool - A	x	x	x	x	x	x	x	20092122	1			
Fine Wire Hand Scratch Brush - B	x	x	x	x	x	x	x	20092118	1			
Parts Cleaning Brush - C	x	x	x	x	x	x	x	20092120	1			
Pipe Brush 0.200 - D	x	x	x	x	x	x	x	20092108	1			
Pipe Brush 3/8 - E	x	x	x	x	x	x	x	20092110	1			

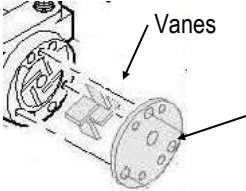


Burner Brush Kit includes all pictured or available for purchase separately.

- A. Pick Hand Tools—set of four (remove o-rings, clean threads and small orifices)
- B. Parts Cleaning Brush (clean painted components)
- C. Fine Wire Hand Scratch Brush (clean pre-heater cap, external nozzle block, burner blower wheel and unpainted components)
- D. 3/16" Pipe Brush (clean nozzle block)
- E. 3/8" Brush (clean solenoid valve)

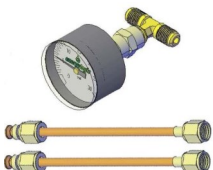
# Service & Maintenance Tools cont'd

Part Description	Current Models							Item Number				
	140H	200H	340H	350H	200B	375B	500B		Qty			
Kit - Maintenance, Air Comp.(Pre 9/11/13)	x	x	x	x	x	x	x	05000096	1			
Kit - Maintenance, Air Comp.(Post 9/11/13)	x	x		x				05000166	1			




The Air Compressor Maintenance kit comes with 4 replacement vanes and the carbon end plate.

Part Description	Current Models							Item Number				
	140H	200H	340H	350H	200B	375B	500B		Qty			
Kit - Gauge, Air CompTest	x	x	x	x	x	x	x	05000092	1			
Replacement Gauge - Silencer Kit	x	x	x	x	x	x	x	20270300	1			



An Air Compressor Test Gauge is used to check the output pressure of the air compressor during burner operation.

Part Description	Current Models							Item Number				
	140H	200H	340H	350H	200B	375B	500B		Qty			
Kit - Maintenance, 140H/200H	x	x						05000027	1			
Kit - Maintenance, 340H/350H			x	x				05000028	1			
*Kit - Maintenance, 340H/350H 8" Filter			x	x				05000031	1			




The maintenance kit provides all the necessary service parts to install into the unit once ash is removed from the heat exchanger, the burner assembly is disassembled and the components are cleaned.

Furnace Maintenance Kit includes:

- 1 Air Compressor Filter
- 1 Solenoid Valve O-ring
- 2 Preheater Gaskets (2 5/8)
- 1 Drip Cap Gasket
- 1 5" Spin-on, Stainless Steel Mesh Filter
- 1 Burner Gasket
- 1 Nozzle

Part Description	Current Models							Item Number				
	140H	200H	340H	350H	200B	375B	500B		Qty			
Kit - Maintenance, 140H/200H w/silencer filter	x	x						04000251	1			
Kit - Maintenance, 340H/350H w/silencer filter			x	x				04000252	1			
*Kit - Maintenance, Lg Filter w/silencer filter			x	x				04000255	1			
Filter, Silencer Air Compressor	x	x	x	x	x	x	x	06000150	1			




The maintenance kit provides all the necessary service parts to install into the unit once ash is removed from the heat exchanger, the burner assembly is disassembled and the components are cleaned.

Furnace Maintenance Kit includes:

- 1 Air Compressor Silencer Filter \*
- 1 Solenoid Valve O-ring
- 2 Preheater Gaskets (2 5/8)
- 1 Drip Cap Gasket
- 1 5" Spin-on, Stainless Steel Mesh Filter
- 1 Burner Gasket
- 1 Nozzle

Part Description	Current Models							Item Number				
	140H	200H	340H	350H	200B	375B	500B		Qty			
Spin-On Filter - 5"	x	x	x	x	x	x	x	20270185	1			
Spin-On Filter - 5" (12-Pack)	x	x	x	x	x	x	x	05000052	1			
*Spin-On Filter - 8"	x	x	x	x	x	x	x	20203106	1			

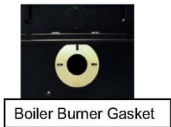


5" or 8" spin on filters may be used with the EnergyLogic filter head assembly (standard with every unit).



Part Description	Current Models							Item Number				
	140H	200H	340H	350H	200B	375B	500B		Qty			
Kit - Maintenance, Boiler					x			05000029	1			
Kit - Maintenance, Boiler						x	x	05000030	1			

The maintenance kit provides all the necessary service parts to install into the unit once ash is removed from the heat exchanger, the burner assembly is disassembled and the components are cleaned.

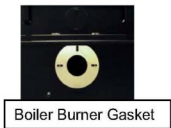


Boiler Maintenance Kit includes:

- 1 Air Compressor Filter
- 2 Solenoid Valve O-ring
- 2 Preheater Gaskets (2 5/8)
- 1 Spin-on, Stainless Steel Mesh Filter
- 1 Boiler Burner Gasket
- 1 Nozzle

Part Description	Current Models							Item Number				
	140H	200H	340H	350H	200B	375B	500B		Qty			
Kit - Maintenance, Boiler w/silencer filter					x			04000253	1			
Kit - Maintenance, Boiler w/silencer filter						x	x	04000254	1			

The maintenance kit provides all the necessary service parts to install into the unit once ash is removed from the heat exchanger, the burner assembly is disassembled and the components are cleaned.



AC Silencer Filter

Boiler Maintenance Kit includes:

- 1 Air Compressor Silencer Filter
- 2 Solenoid Valve O-ring
- 2 Preheater Gaskets (2 5/8)
- 1 Spin-on, Stainless Steel Mesh Filter
- 1 Boiler Burner Gasket
- 1 Nozzle

Part Description	Current Models							Item Number				
	140H	200H	340H	350H	200B	375B	500B		Qty			
Kit - Boiler Mixing Valve - 1 inch					x	x		05000072	1			



Mixing Valve Kit for 140B, 200B and 375B—insures correct return water temperature to boiler is 140 degrees.

Included in kit:

- 1" 3-way thermostatic mixing valve
- Temperature / Pressure Gauges (2)
- Instructions (loop diagram and flow curves)

Part Description	Current Models							Item Number				
	140H	200H	340H	350H	200B	375B	500B		Qty			
Kit - Boiler Mixing Valve - 1.5 inch							x	05000073	1			
Gauge, Temp/Pressure					x	x	x	20270302	1			

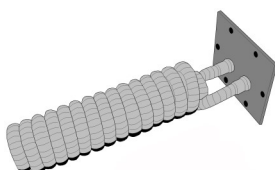


Mixing Valve Kit for 500B—insures correct return water temperature to boiler is 140 degrees.

Included in kit:



- 1.5" 3-way thermostatic mixing valve
- Temperature / Pressure Gauges (2)
- Instructions (loop diagram and flow curves)

Part Description	Current Models							Item Number				
	140H	200H	340H	350H	200B	375B	500B		Qty			
Coil - Domestic, Hot Water, 4 GPM					x			20362189	1			
Coil - Domestic, Hot Water, 6 GPM						x		20362188	1			
Coil - Domestic, Hot Water, 8 GPM							x	20362190	1			



Domestic Coils are used when the hydronic system requires an open-loop section where heated water is not returned to the closed-loop boiler system. For example, water is heated for washing cars at a carwash. The heated water will not be returned to the system but allowed to run into a drain.

Item Number	Model	Description	Weight
03250106	250SW	250 Gallon Single Wall Workbench Tank	355 lbs
03250106-CN	250SW	250 Gallon Single Wall Workbench Tank— <b>CANADIAN</b>	355lbs
03250208	250DW	250 Gallon Double Wall Workbench Tank	748 lbs






Standard 250 gallon tanks includes drain valve assembly and sight gauge. Meets NFPA 30.30A & 31 standards, UL 142 tested & listed.  
\*Tank Mount Kit must be ordered separately.

Dimensions  
Single Wall: 62" L x 31.9" W x 38"H  
Weight:355 lbs  
Double Wall: 65.3" L x 32.2 "W x 40.2 "H  
Weight:748 lbs

Single Wall      Double Wall

Item Number	Model	Description	Weight
03500109	500SW	500 Gallon Single Wall Workbench Tank	662 lbs
03500207	500DW	500 Gallon Double Wall Workbench Tank	1169 lbs

Standard 500 gallon tanks includes drain valve assembly and sight gauge. Meets NFPA 30.30A & 31 standards, UL 142 tested & listed.  
\*Tank Mount Kit must be ordered separately.

Dimensions  
Single Wall: 73.7" L x 42.5"W x 45.8"H  
Weight:662 lbs  
Double Wall: 89.3" L x 45.2"W x 38.8"H  
Weight:1,169 lbs

Single Wall      Double Wall

Part Description	Current Models							Item Number				
	140H	200H	340H	350H	200B	375B	500B		Qty			
Tank Mount Kit - 2250/500 Tank	x	x						05000075	1			
Copper Line, Pump to Preheater 8.5' - 250 Gallon	x	x						14070206	1			



Tank Mount Kits include mounting tubes, furnace support arms, hardware, pump harness and discharge copper.

Part Description	Current Models							Item Number				
	140H	200H	340H	350H	200B	375B	500B		Qty			
**Tank Mount Kit - 250/500 Gallon Tanks			x	x				05000076	1			
Copper Line, Pump to Preheater 8.5' - 250 Gallon			x	x				14070206	1			
Angle Brace (2 incl. in 05000076)			x	x				20352224	1			



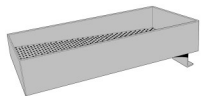
Tank Mount Kit includes furnace support arms, angle braces, hardware and discharge copper. For use with EnergyLogic 250 and 500 gallon workbench tanks.

Part Description	Current Models							Item Number				
	140H	200H	340H	350H	200B	375B	500B		Qty			
Vent - 4 Inch Emergency Tank	x	x	x	x	x	x	x	20252174	1			



Install into aboveground storage tanks as a code requirement to help prevent the tank from becoming over-pressurized and possible rupturing if ever exposed to fire.

Part Description	Current Models							Item Number				
	140H	200H	340H	350H	200B	375B	500B		Qty			
Strainer Pan Assembly—10" x 20"	x	x	x	x	x	x	x	81010060	1			



Used as a funnel for draining and screening used oil from filters or components into the storage tank.

Part Description	Current Models							Item Number				
	140H	200H	340H	350H	200B	375B	500B		Qty			
Gauge - Tank, 24" 250 Gallon SW, 500 Gallon DW	x	x	x	x	x	x	x	20252140	1			
Gauge - Tank, 30" 250 Gallon DW	x	x	x	x	x	x	x	20252142	1			
Gauge - Tank, 36" 500 Gallon SW	x	x	x	x	x	x	x	06000728	1			



The tank gauge is used to monitor the fuel level in the tank.

Part Description	Current Models							Item Number				
	140H	200H	340H	350H	200B	375B	500B		Qty			
Switch-Low Fuel, 250 Gallon DW	x	x	x	x	x	x	x	14052236	1			
Switch-Low Fuel, 26" 250 Gallon SW, 500 Gallon DW	x	x	x	x	x	x	x	14052234	1			
Switch-Low Fuel, 35" 500 Gallon SW	x	x	x	x	x	x	x	04000379	1			
*Switch-Low Fuel, Adjustable up to 62"	x	x	x	x	x	x	x	14052235	1			
Switch-Float, Replacement 12' Cord	x	x	x	x	x	x	x	06000532	1			



Interrupts the operation of the unit when the fuel level is too low and prevents air and contaminants from entering the fuel system. Operates on the low voltage (24V) through the thermostat circuit.

Part Description	Current Models							Item Number				
	140H	200H	340H	350H	200B	375B	500B		Qty			
*Gauge Leak Detection, for Double Wall Tanks	x	x	x	x	x	x	x	06001084	1			

Part Description	Current Models							Item Number				
	140H	200H	340H	350H	200B	375B	500B		Qty			
*Alarm Kit, Tank Overfill	x	x	x	x	x	x	x	05000193	1			

Part Description	Current Models							Item Number				
	140H	200H	340H	350H	200B	375B	500B		Qty			
*SmartStat Kit (Not Pictured)	x	x	x	x	x	x	x	05000136	1			
SmartStat Display	x	x	x	x	x	x	x	06000814	1			
SmartStat Wireless	x	x	x	x	x	x	x	05000179	1			
SmartStat Wireless Expansion Unit	x	x	x	x	x	x	x	05000179A	1			



The SmartStat Kit is a 24/7 programmable thermostat with monitoring system, LED indicators & display readouts. Monitors fuel level, filter condition, tracks run hours & alerts trip-out condition.

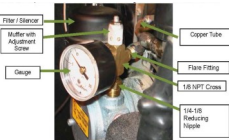
The SmartStat Wireless provides 24/7 remote thermostat control from any smart phone, tablet or internet connected device. Send email or text message for preventative maintenance, service schedule and trouble codes, as well as self-diagnoses minor problems such as clogged filters and low fuel.

Part Description	Current Models							Item Number				
	140H	200H	340H	350H	200B	375B	500B		Qty			
WiFi Thermostat Kit	x	x	x	x	x	x	x	05000192	1			



The WiFi Thermostat remotely monitors and controls your EnergyLogic heater and is fully programmable, Wi-Fi capable, touchscreen thermostat allows for control of settings locally or remotely, via Honeywell Total Connect Comfort web or mobile application. Notifications at the thermostat, and via e-mail, alert when the controlled climate loses power or falls outside of a specified temperature range. Takes advantage of existing power connection at the heater to supply proper, consistent power to the thermostat.

Part Description	Current Models							Item Number				
	140H	200H	340H	350H	200B	375B	500B		Qty			
Air Compressor Silencer Kit	x	x	x	x	x	x	x	05000111	1			
Replacement Filter - Silencer Kit	x	x	x	x	x	x	x	06000150	1			
Replacement Gauge - Silencer Kit	x	x	x	x	x	x	x	20270300	1			



The Air Compressor Silencer Kit provides 6 dB in noise reduction, which is a clearly noticeable reduction in noise level. For every 3 dB, another 50% of the remaining sound pressure is eliminated. We are able to do this by reducing much of the higher frequency noise from the compressor. Simple to install and replaces the standard inlet and outlet components of the air compressor. Necessary components are shipped in complete kits with replacement parts offering.

Part Description	Current Models							Item Number				
	140H	200H	340H	350H	200B	375B	500B		Qty			
Meter - Enhanced Remote Hour	x	x	x	x	x	x	x	05000183	1			



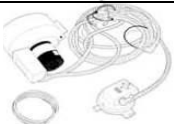
A Remote Hour Meter may be used when the hour meter that comes standard with every furnace and boiler is difficult to view.

Part Description	Current Models							Item Number				
	140H	200H	340H	350H	200B	375B	500B		Qty			
Air Intake - Outside, AF	x	x		x	x			05000113	1			



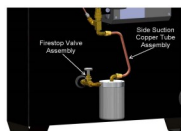
A Fresh Air Intake Kit would be used for environments prone to positive or negative air pressures or environments with debris floating in the air (for example, saw mill, concrete, detail shops).

Part Description	Current Models							Item Number				
	140H	200H	340H	350H	200B	375B	500B		Qty			
Draft Inducer	x	x	x	x	x	x	x	05000090	1			



The Draft Inducer Kit would be used in an installation where a low draft condition is present. The low draft condition may not be determined until after the furnace or boiler is installed and operational. Ensure the furnace or boiler is operating as efficiently as possible in the given conditions.

Part Description	Current Models							Item Number	Item			
	140H	200H	340H	350H	200B	375B	500B		Qty			
Side Suction Kit - 250 Gallon Tank SW, 500 Gallon DW Tank	x	x	x	x	x	x	x	05000120	1			
Side Suction Kit - 250 Gallon DW Tank	x	x	x	x	x	x	x	05000123	1			
Side Suction Kit—500 Gallon SW	x	x	x	x	x	x	x	04000380	1			

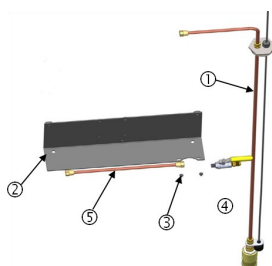


Side Suction Kits are designed to use with EnergyLogic storage tanks.

Kit includes: Side Suction Tube Assembly, Firestop Valve Assembly, Brass Fittings to connect the metering pump to side of the EL tank, and Low Level Cut-off Switch

\*Filter head assembly is now included with the furnace / boiler.

Part Description	Current Models							Item Number	Item			
	140H	200H	340H	350H	200B	375B	500B		Qty			
Top Suction 3/8" Pickup Tube w/ 1" Foot Valve	x	x			x			05000165	1			
Top Suction 1/2" Pickup Tube w/ 1" Foot Valve			x	x		x	x	05000169	1			
Valve - Foot 1"	x	x	x	x	x	x	x	04000086	1			
Switch-Float, Replacement, 12' Cord	x	x	x	x	x	x	x	06000532	1			



Save time / money and increase reliability when delivering fuel from the top of a tank. An EnergyLogic Top Suction Kit combines fuel pick-up with a low fuel cut off switch. The springless foot valve prevents loss of prime during long off cycles. This simple to install product is also adjustable to work with most tanks.

Part Description	Current Models							Item Number	Item			
	140H	200H	340H	350H	200B	375B	500B		Qty			
Band - Heater, Filter	x	x	x	x	x	x	x	20503109	1			



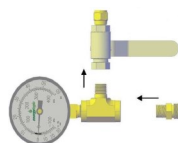
A Hot Filter Band would be used when the fuel in the tank that will pass through the spin-on filter is below 50°/10°C.

Part Description	Current Models							Item Number	Item			
	140H	200H	340H	350H	200B	375B	500B		Qty			
High Point Bleed Assembly	x	x	x	x	x	x	x	14070240	1			



Use a High Point Bleed to purge air from the fuel system when the fuel piping is routed with high points which can trap air.

Part Description	Current Models							Item Number	Item			
	140H	200H	340H	350H	200B	375B	500B		Qty			
Kit - Gauge, Remote System All	x	x	x	x	x	x	x	05000091	1			



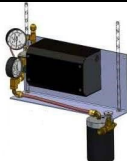
A Remote Pressure Gauge Kit installed below the preheater for monitoring the fuel system pressure when the fuel pump is not visible when working at the burner.

* Not Pictured	Current Models							Item				
Part Description	140H	200H	340H	350H	200B	375B	500B	Number	Qty			
Filter Assembly - Cleanable 5"	x	x	x	x	x	x	x	14003111	1			
Filter Assembly - Lg Cleanable 8"	x	x	x	x	x	x	x	14003114	1			
*Filter Element - Cleanable 5"	x	x	x	x	x	x	x	06000027	1			
*Filter Element - Lg Cleanable 8"	x	x	x	x	x	x	x	06000026	1			



Use a cleanable filter when the reoccurring costs of suction line filter replacements has grown to a noticeable amount.

	Current Models							Item				
Part Description	140H	200H	340H	350H	200B	375B	500B	Number	Qty			
Kit - Pump and Filter Bracket	x	x	x	x	x	x	x	05000095	1			
GFS Pump Bracket w/Firestop Valve (1 incl.; order additional for # of units)	x	x	x	x	x	x	x	04000097	1			



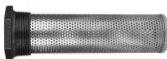
This bracket kit allows for mounting the EnergyLogic metering pump & filter head. It can be mounted on a wall or directly below the furnace from 3/8" all thread rod. Available for mounting the pump and filter head assembly on a Gravity Feed System.  
Note: pump & filter head sold separately.

	Current Models							Item				
Part Description	140H	200H	340H	350H	200B	375B	500B	Number	Qty			
Pump - Electric, Transfer, 4.25 GPM	x	x	x	x	x	x	x	20202129	1			



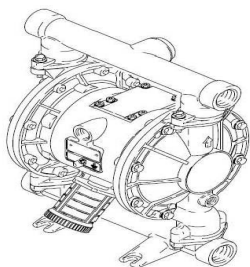
Electric transfer pump which can be used to transfer fuel from a remote bulk fuel source to a day tank. It allows a bulk fuel storage tank to be remotely located (typically outdoors) with a separate day tank located indoors at or near the burner. Typically the indoor day tank is small in size requiring minimal space.

	Current Models							Item				
Part Description	140H	200H	340H	350H	200B	375B	500B	Number	Qty			
Diffuser, transfer pump - 2" Npt x 1 1/4" Npt	x	x	x	x	x	x	x	06000517	1			



Use this tank diffuser (2" Npt x 1 1/4" Npt) with any transfer pump to reduce aeration of the fuel in the tank which can lead to furnace trip outs.

* Not Pictured	Current Models							Item				
Part Description	140H	200H	340H	350H	200B	375B	500B	Number	Qty			
Pump - Diaphragm 1 in., 40 GPM	x	x	x	x	x	x	x	20202122	1			
Pump - Diaphragm 3/4 in., 16GPM	x	x	x	x	x	x	x	20202121	1			
Pump - Diaphragm Air Install Kit	x	x	x	x	x	x	x	20202126	1			
Pump - Diaphragm Press Relief Valve	x	x	x	x	x	x	x	20202128	1			
*Pump - Diaphragm Wall Mt, 3/4 in.	x	x	x	x	x	x	x	20202124	1			
*Pump - Diaphragm Wall Mt, 1 in.	x	x	x	x	x	x	x	20202125	1			
Pump - Diaphragm 20202121 Rebuild Kit	x	x	x	x	x	x	x	20202134	1			
Pump - Diaphragm 20202122 Rebuild Kit	x	x	x	x	x	x	x	06000287	1			
*Pump - Diaphragm Fluid Install Kit	x	x	x	x	x	x	x	20202127	1			
Muffler, Diaphragm Pumps	x	x	x	x	x	x	x	06000750	1			



A pneumatic transfer pump is used to transfer fuel from a remote bulk fuel source to a day tank. It allows a bulk fuel storage tank to be remotely located (typically outdoors) with a separate day tank located indoors at or near the burner. Typically the indoor day tank is small in size requiring minimal space.



Air Install  
Pressure  
Regulator  
Kit



Muffler



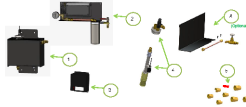
Pressure Relief Valve Kit

Rebuild Kit






Part Description	Current Models							Item Number	Qty			
	140H	200H	340H	350H	200B	375B	500B					
Gravity Feed System—Solo	x	x	x	x	x	x	x	05000118	1			
GFS Pump Bracket w/Firestop Valve	x	x	x	x	x	x	x	04000097	1			
Pump w/fittings, 2 Stage Replacement								04000352	1			
Tank Assembly—2 Gallon								04000297	1			



EnergyLogic's GFS—Solo is designed to fuel a heater or boiler unit from a large fuel storage tank (sold separately). The system continuously filters and transfers fuel to an elevated reservoir, allowing gravity to maintain a constant fuel supply to the unit's metering pump. In the event of low fuel in either the reservoir or storage tank, system operation is interrupted and visual notification is illuminated.

Kit includes: 1/2" fuel pickup assembly w/float switch; two-stage transfer pump w/mounting bracket, filter head, and 8" filter; 2 gallon reservoir w/float switch assembly; low-fuel indicator box; metering pump mounting bracket w/filter head and firestop valve

Part Description	Current Models							Item Number	Qty			
	140H	200H	340H	350H	200B	375B	500B					
Gravity Feed System—Crew	x	x	x	x	x	x	x	05000150	1			
05000150 - GFS Crew Service Parts												
Tank Assembly - 10 Gallon GFS—Crew								04000420	1			
Pump - Transfer, 10 GPH with motor								06000745	1			
Pump - Transfer, 20 GPH with motor								06000820	1			
Motor - Pump, 10 – 20 GPH								06001137	1			
Gauge, Vacuum - 1/4" MNPT, 30/0" Vac								06000516	1			
Float Switch Assembly - GFS, 4 Unit								04000288	1			
Fuse, 8 amp								06000387	1			
Pump Head, 10 GPH Replacement								06000895	1			
Pump Head, 20 GPH Replacement								06001211	1			

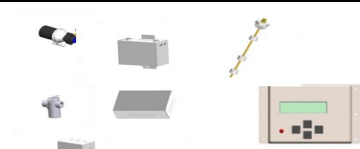


EnergyLogic's GFS—Crew supports the operation of up to 4 heater and boiler units from a single bulk fuel storage tank (sold separately). This automated system filters and transfers up to 20 gallons per hour of fuel to a 10 gallon, elevated reservoir, allowing gravity to maintain a constant fuel supply to the units' metering pumps. A display interface provides real-time feedback on the status of the system. In the event of low fuel in either the reservoir or the storage tank, system operation is interrupted and visual notification is illuminated.

Kit includes: 1/2" fuel pickup assembly w/float switch; 20 GPH transfer pump w/mounting bracket, filter head, vacuum sensor, and cleanable filter; 10 gallon reservoir w/float switch assembly; control box

EnergyLogic recommends that a metering pump mounting bracket w/filter head and firestop valve (PN: 04000097) be ordered for each unit that is to be serviced by the GFS.

Part Description	Current Models							Item Number	Qty			
	140H	200H	340H	350H	200B	375B	500B					
Gravity Feed System—Fleet	x	x	x	x	x	x	x	05000132	1			



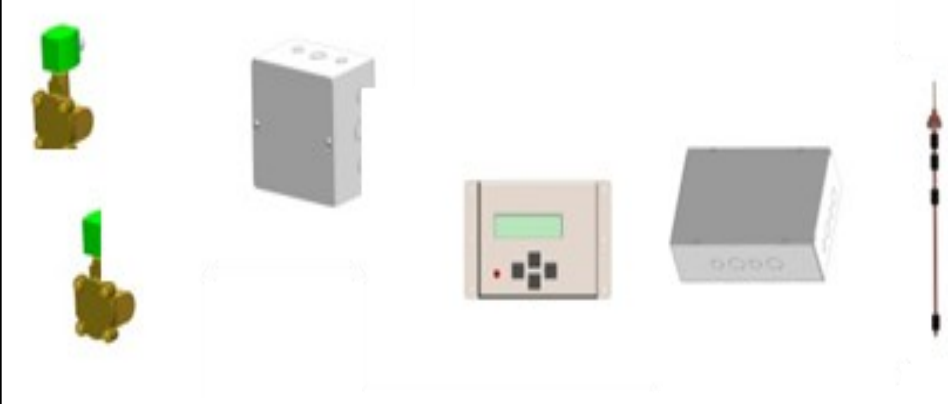
EnergyLogic's GFS—Fleet facilitates the operation of up to 10 heater and boiler units from a single bulk fuel storage tank (sold separately). This enhanced automated system filters and transfers up to 40 gallons per hour of fuel to a 20 gallon, elevated reservoir, allowing gravity to maintain a constant fuel supply to the units' metering pumps. A display interface provides expanded real-time feedback on the status of the system. In the event of low fuel in either the reservoir or storage tank, system operation is interrupted and visual notification is illuminated.

Kit includes: 1" fuel pickup assembly w/float switch; 40 GPH transfer pump w/mounting bracket, filter head, vacuum sensor, and cleanable basket filter; 20 gallon reservoir w/float switch assembly; control box; pump box

EnergyLogic recommends that a metering pump mounting bracket w/filter head and firestop valve (PN: 04000097) be ordered for each unit that is to be serviced by the GFS.

GFS Replacement Parts												
Part Description	* Not Shown	Current Models						Item Number	Qty			
		140H	200H	340H	350H	200B	375B					
GFS Day Tank Assembly, 20 Gallon								04000001	1			
4-Float Switch Assembly, Enhanced Multi-Unit GFS								04000185	1			
Pump - GFS Transfer, 40 GPH								06000001	1			
Filter - GFS, Cleanable with Basket								06000005	1			
Switch, Vacuum								06000464	1			
GFS Relay Terminal Base (Rev1 Multi Unit GFS)								06000003	1			
*Pump, 40 GPH replacement (use for Enhanced & Rev.1)								06000347	1			
*Motor, 40 GPH replacement (use for Enhanced & Rev.1)								06000524	1			
*Basket, GFS Cleanable Filter								06000460	1			
*Seal, GFS Basket Filter								06000152	1			
Fuse, 10 amp								20552330	1			
*Original GFS Float Switch, 3-float, no connector								04000002	1			
*Original 10-Unit GFS Float Switch, 3-float with 7 pin connector								04000050	1			

## Tank Level Control Kit with 4-Float Switch



Energy Logic's Fuel Transfer Kits eliminate manual filling processes by automatically transferring your used oil from the main tank into the secondary tank. The fuel in the secondary tank is monitored by a 4 float switch that will manage fuel levels at all times. The system is equipped with a display interface that informs the user of high vacuum, low fuel level conditions along with ability to turn it on and off. Kit includes: Display, pump box, tank box, 25' & 100' of cat5 cord, 2 - 3/4" solenoids and 4 float switch assembly for use with pneumatic pump (sold separately).

Part Description	Current Models							Item Number	Qty			
	140H	200H	340H	350H	200B	375B	500B					
Auto Transfer System (no pump)	x	x	x	x	x	x	x	05000205	1			
Auto Transfer System w/Electric Pump, 40 GPH	x	x	x	x	x	x	x	05000206	1			
<b>Auto Transfer &amp; Tank Level Control System Replacement Parts</b>												
Switch, 4 Float, 30"	x	x	x	x	x	x	x	04000184	1			
Valve, 3/4" Solenoid (NC-normally closed)	x	x	x	x	x	x	x	06000481	1			
Control Box assembly	x	x	x	x	x	x	x	04000433	1			
Display, Fuel Transfer and Tank Level Control (used on obsolete kits 05000133 and 05000134)	x	x	x	x	x	x	x	06000463	1			

## Auto Transfer Kit with Electric Pump



EnergyLogic's Fuel Transfer Kits eliminate manual filling processes by automatically transferring your used oil from the main tank into the secondary tank. The fuel in the secondary tank is monitored by a 4 float switch that will manage fuel levels at all times. The system is equipped with a display interface that informs the user of high vacuum, low fuel level conditions along with ability to turn it on and off. Kit in-

## Fuel Transfer Systems Common Replacement Parts

Part Description	Current Models							Item Number	Qty			
	140H	200H	340H	350H	200B	375B	500B					
Control Box Assembly, Pump	x	x	x	x	x	x	x	04000182	1			
Control Box Assembly, Tank	x	x	x	x	x	x	x	04000183	1			
Display Module	x	x	x	x	x	x	x	06000463	1			
Control board, Small Control box, Pump	x	x	x	x	x	x	x	06000466	1			
Control board, Large Control box, Main	x	x	x	x	x	x	x	06000467	1			
Patch Cord - Cat5e, 25' gray	x	x	x	x	x	x	x	06000472	1			
Patch Cord - Cat5e, 50' black	x	x	x	x	x	x	x	06000480	1			
Main Tank Float Switch	x	x	x	x	x	x	x	06000532	1			
Switch, Vacuum	x	x	x	x	x	x	x	06000464	1			
Gauge, Vacuum - 30/0 Vac, 1/4 MNPT	x	x	x	x	x	x	x	06000516	1			
Float Switch with 20' Cord & Grip, Optional for GFS & Auto Transfer Sys - specify when ordering								06000675	1			

\*1 incl. order additional per no. of units

A Flue kit must be installed with every furnace and boiler to provide a means of exhausting hot combustion gases out of the heat exchanger in the furnaces and out of the combustion chamber of the boilers. The combustion gases are routed outside the building and into the atmosphere. EnergyLogic flue kits are Class A, all fuel rated and meet or exceed NFPA guidelines and are made by a supplier that is a leader in quality and durability. The flue kits are packaged with some components that are custom built to mate up with EL furnace and boiler

Stainless Steel (SS) FLUE KITS		Item			
Part Description	Weight	Number	Qty		
6 Inch - Flue/Chimney Kit A (Metal, Flat to 6/12 Pitch)	106lbs/48.1kg	05000097-SS	1		
6 Inch - Flue/Chimney Kit A3 (Metal, Flat to 6/12 Pitch, w/3rd 36" pipe)	125lbs/56.7kg	05000098-SS	1		
6 Inch - Flue/Chimney Kit B (Metal, 6/12 to 12/12 Pitch)	106lbs/48.1kg	05000099-SS	1		
6 Inch - Flue/Chimney Kit B3 (Metal, 6/12 to 12/12 Pitch, w/3rd 36" pipe)	125lbs/56.7kg	05000100-SS	1		
6 Inch - Flue/Chimney Kit C (Rubber - Flat to 12/12 Pitch)	116lbs/52.6kg	05000101-SS	1		
6 Inch - Flue/Chimney Kit C3 (Rubber - Flat to 12/12 Pitch, w/3rd 36" pipe)	131lbs/59.4kg	05000102-SS	1		
8 Inch - Flue/Chimney Kit A (Metal, Flat to 6/12 Pitch)	115lbs/52.2kg	05000103-SS	1		
8 Inch - Flue/Chimney Kit A3 (Metal, Flat to 6/12 Pitch, w/3rd 36" pipe)	139lbs/63.1kg	05000104-SS	1		
8 Inch - Flue/Chimney Kit B (Metal, 6/12 to 12/12 Pitch)	115lbs/52.2kg	05000105-SS	1		
8 Inch - Flue/Chimney Kit B3 (Metal, 6/12 to 12/12 Pitch, w/3rd 36" pipe)	139lbs/63.1kg	05000106-SS	1		
8 Inch - Flue/Chimney Kit C (Rubber - Flat to 12/12 Pitch)	125lbs/56.7kg	05000107-SS	1		
8 Inch - Flue/Chimney Kit C3 (Rubber - Flat to 12/12 Pitch, w/3rd 36" pipe)	149lbs/67.6kg	05000108-SS	1		
10 Inch - Flue/Chimney Kit A- (Metal - Flat Roof to 6/12 Pitch)	155lbs/70.31kg	05000121-SS	1		

This flue material meets all NFPA guidelines and is UL 103HT and C-UL Listed. This flue material is an available in option in some "Complete Systems & Bundle Kits".

## Flue Kit A - Flat Roof

Item	Part Description	Qty	Item	Part Description	Qty
1	Flue Round Top	1	5	Finishing Collar / Pipe Adapter SW to DW	1
2	Storm Collar	1	6	Trim Collar	1
3	36 in Double Wall Pipe, SS	2	7	Metal Flashing - 0/12 to 6/12	1
4	Roof Support Kit	1	24	Flue 6 IN to 8 IN *	1
			26	Adapter 6 IN Crimped to 6 IN Duravent **	1

## Flue Kit B - Pitched Roof

Item	Part Description	Qty	Item	Part Description	Qty
1	Flue Round Top	1	5	Finishing Collar / Pipe Adapter SW to DW	1
2	Storm Collar	1	6	Trim Collar	1
3	36 in Double Wall Pipe, SS	2	8	Metal Flashing - 7/12 to 12/12	1
4	Roof Support Kit	1	24	Flue 6 IN to 8 IN *	1
			26	Adapter 6 IN Crimped to 6 IN Duravent **	1

## Flue Kit C

Item	Part Description	Qty	Item	Part Description	Qty
1	Round Top Collar	1	9	Rubbert Boot Kit	1
3	36 in Double Wall Pipe, SS	2	24	Flue 6 IN to 8 IN *	1
5	Finishing Collar / Pipe Adapter SW to DW	1	26	Adapter 6 IN Crimped to 6 IN Duravent **	1
6	Trim Collar	1			

\* 6 Inch Flue Kit Only

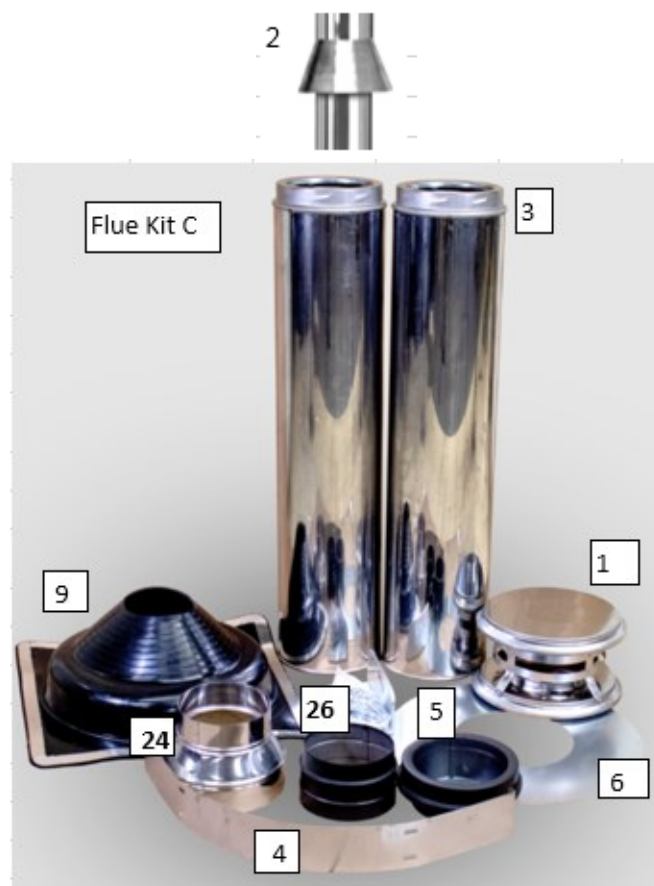
6 Inch Only - Discard if not need-

\*\*ed

## Flue Kit A



## Flue Kit B



## Flue Material - 6 Inch Standard Flue Material

6 Inch Flue Parts * Not Shown		Item	New Item			
Ref.#	Part Description	Number	Number	Qty		
1	Cap — Flue, Round Top 6 inch	06000085	81010062	1		
2	Collar — Storm, 6 inch	06000086	4917	1		
3	**Pipe — 36 in. x 6 inch Double Wall	06000087-SS	4764	1		
4	Support — Roof, Kit 6 in. use w/ rubber boot	04000270		1		
4	Support — Roof, Kit 6 in. use w/ metal flashing	04000338		1		
5	Adapter — Pipe, SW to DW 6 inch	06000088	4912	1		
6	Firestop, 6 inch	06000089	76001403	1		
7	Flashing — Metal, 6 inch Flat to 6/12	06000090	4915	1		
8	Flashing — Metal, 6 inch 6/12 to 12/12	06000092	4916	1		
9	Boot Kit — Rubber, 6 inch Flat to 12/12	04000236		1		
10	Pipe — 12 in. x 6 inch Double Wall	06000094	4899	1		
10	Pipe — 24 in. x 6 inch Double Wall	06000095-SS		1		
13	**Offset — 15 Degree Elbow, Kit 6 inch	06000096-SS	4903	1		
14	**Offset — 30 Degree Elbow, Kit 6 inch	06000097-SS	4904	1		
17	Shield — Attic Insulation 6 inch	06000099	4951	1		
18	Band — Wall 6 inch	06000100		1		
19	Boot Only, 6 inch: Flat to 12/12	06000679		1		
20	**Tee & Plug 6 inch Insulated	06000102		1		
21	Spark Arrestor—Flue Cap 6 inch	06000101		1		
22	Resupport — Universal Interior 6 inch	06000103		1		
24	Reducer, 8 inch Crimped to 6 inch, female	06000091		1		
25	*Plate, Wall Flue Cover - 6 Inch* (4 required)	06000969		1		
26	Adapter 6 Inch Crimped to 6 Inch	76001405		1		

## Flue Material - 8 Inch Standard Flue Material

8 Inch Flue Parts * Not Shown		Item				
Ref.#	Part Description	Number		Qty		
1	Cap — Flue, Round Top 8 inch	20702140	81010124	1		
2	Collar — Storm 8 inch	20702142	4943	1		
3	**Pipe — 36 in. x 8 inch Double Wall	20702143-SS	4797	1		
4	Support — Roof, Kit 8 in. use w/ rubber boot	04000271		1		
4	Support — Roof, Kit 8 in. use w/ metal flashing	04000339		1		
5	Adapter — Pipe, SW to DW 8 inch	20702145	4938	1		
6	Firestop 8 inch	20702146	76001404	1		
7	Flashing — Metal, 8 inch Flat to 6/12	20702147	4941	1		
8	Flashing — Metal, 8 inch 6/12 to 12/12	20702148	4942	1		
9	Boot Kit — Rubber, 8 inch Flat to 12/12	04000237		1		
10	Pipe — 12 in. x 8 inch Double Wall	20702150-SS	4925	1		
10	Pipe — 24 in. x 8 inch Double Wall	20702151-SS	4796	1		
13	**Offset — 15 Degree Elbow, Kit 8 inch	20702162-SS	4929	1		
14	**Offset — 30 Degree Elbow, Kit 8 inch	20702163-SS	4930	1		
15	Support — Universal Wall 8 inch	20702154	81010138	1		
17	Shield — Attic Insulation 8 inch	20702156		1		
18	Band — Wall 8 inch	20702157		1		
19	Boot Only, 8/10 inch, Flat to 12/12	06000680		1		
20	Tee & Plug, Insulated + Wall Support 8 inch	13002140		1		
21	Spark Arrestor — Flue Cap 8 inch	20702141		1		
22	Resupport — Universal Interior 8 inch	20702159		1		
25	*Plate, Wall Flue Cover - 8 Inch* (4 required)	06000968		1		

Note: #22 recommended for 15° & 30° Elbows



## Flue Material - 10 Inch

10 Inch Flue Parts		* Not Shown				
Ref.#	Part Description	Item Number	New Item Number	Qty		
1	Cap — Flue, Round Top 10 inch	06000400	4779	1		
2	Collar — Storm, 10 inch	06000401	4784	1		
3	Pipe — 36 in. x 10 inch Double Wall, SS	06000402	4783	1		
4	Support — Roof, Kit 10 in. use w/ rubber boot	04000272		1		
4	Support — Roof, Kit 10 in. use w/ metal flashing	04000340		1		
5	Adapter — Pipe, SW to DW 10 inch	06000404	4775	1		
6	Firestop, 10 inch	06000405	81010141	1		
7	Flashing Metal, 10 inch 2/12 - 6/12	06000406	4776	1		
8	Flashing — Metal, 10 inch 6/12 to 12/12	06000407		1		
9	Boot Kit — Rubber, 10 inch Flat to 12/12	04000238		1		
10	Pipe — 12 in. x 10 inch Double Wall, SS	20702310	4780	1		
10	Pipe — 24 in. x 10 inch Double Wall, SS	20702311		1		
13	Offset — 15 Degree Elbow, Kit 10 inch	20702322	81010139	1		
14	Offset — 30 Degree Elbow, Kit 10 inch	20702323	4753	1		
15	Support — Wall, Kit 10 inch	20702314	4774	1		
17	Shield — Attic Insulation 10 inch	20702316		1		
18	Band — Wall 10 inch	20702317		1		
19	Boot Only, 8/10 inch, Flat to 12/12	06000680		1		
20	Tee & Plug, Insulated + Wall Support 10 inch	13002320		1		
21	Spark Arrestor — Flue Cap 10 inch	20702321		1		
22	Resupport — Interior 10 inch	20702319		1		
25	*Plate, Wall Flue Cover - 10 inch* (4 required)	06000970		1		

*Note: #22 recommended for 15° & 30° Elbows*



EnergyLogic recommends avoiding 90 degree elbows & horizontal flue. When side wall penetration is necessary, our Thru-the-Wall Angled Connector Kit is a wall-supported chimney system with an angled length of flue pipe passing through an exterior wall, connecting to a Tee (an additional T is required at the furnace) and running vertically up the exterior wall to termination above the roof line. The angle of the through-wall piping allows for proper ventilation without all of the problems associated with 90° bends or straight horizontal piping. The Thru-the-Wall Angled Connector Kit provides all the necessary parts for a complete installation plus three 3' sections of Insulated Pipe. Additional sections may be added to reach desired chimney height. One Wall Band is included in the kit. Additional Wall Bands could be required if your vertical chimney run is more than 16' high. This flue material meets all NFPA guidelines and is UL 103HT Listed.

The Thru-the-Wall Angled Connector Kit can be used in conjunction with EnergyLogic wall mounting brackets to help get around eaves or other obstructions that might prevent the use of standard brackets. Our double-wall flue pipe with stainless steel inner pipe and galvanized outer pipe\* are zinc-plated and rust-resistant for toughness and quality that will last for years.

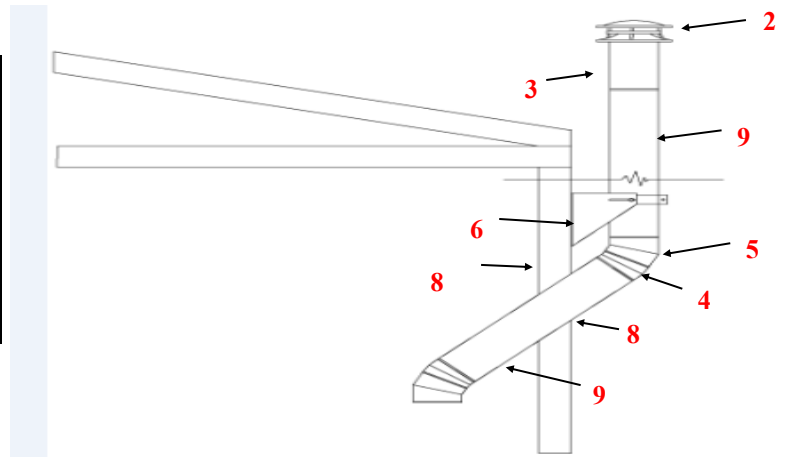
**IMPORTANT:** The Thru-the-Wall Angled Connector Kit is only to be used if roof penetration is not allowed or is not possible. If the through the wall kit is used, the length of angled pipe should be limited to that portion that goes through the wall. The pipe that leads up to the wall should be vertical to 30 degrees. As with all flue, yearly maintenance (cleaning) is required on the angled section (provide method for clean out).

**NOTE:** If going through the wall in Canada, the C-UL listing requires the use of the Blocked Vent Switch Kit – Field Controls Model WMO-1 200.

Through-the-Wall Flue Kits		Item			
Part Description	Number	Qty			
6 Inch Through-the-Wall Angle Connector Kit* - Stainless Steel	05000176—SS	1			
8 Inch Through-the-Wall Angle Connector Kit* - Stainless Steel	05000177—SS	1			
10 Inch Through-the-Wall Angle Connector Kit* - Stainless Steel	05000178-SS	1			

\* Note: an additional T is required at the furnace when using these kits

*Not Shown Ref.#	Through-the-Wall Angled Connector Kit Includes Part Description	Qty
1	Round Top Flue Cap	1
2	*8 inch crimped to 6 inch Reduce (6" Kit Only)	1
3	18 in. Pipe	1
4	Elbow Kit, 15 degree (use with 30 for 45 degrees)	1
5	Elbow Kit, 30 degree	1
6	Wall Support Kit	2
7	*Chimney Pipe Adapter (SW to DW)	1
8	*Wall Plate, Flue Cover	4
9	36 in. Pipe (2 shown)	3



High Wind Cap Kit Part Description	Item Number	Qty			
High Wind Cap Kit—6"	05000201-SS	1			
High Wind Cap Kit—8"	05000202-SS	1			
High Wind Cap Kit—10"	05000203-SS	1			







*Where There's Energy, There's Opportunity™*

Orders: 1+((615) 471-5200

Fax: 1+(615) 471-5202

318 Seaboard Lane Suite 316

Franklin, TN 37067

[www.energylogic.com](http://www.energylogic.com)

TM